

## BirdData Help Index



**Click any of the icons shown here to obtain information about that icon's function.**

The 22 icons located on the right side of the screen are used to access the various program functions. Most of them properly convey their function, but there are also text prompts. As you move the mouse over any of the icons on the program screen, you will see text in the lower left status bar that describes the icon function.

**About**

**Registration**

**Topic Index**

## **Topic Index**

[About BirdData](#)

[Acknowledgments](#)

[Adding Babies](#)

[Baby Data](#)

[Background Color](#)

[Changing User Icons](#)

[Charting Weights](#)

[Daily Weighing](#)

[Help - How to access](#)

[Individual Baby Records](#)

[Moving & Deleting Babies](#)

[Packing Files](#)

[Pair Data](#)

[Pet Data](#)

[Printer Setup](#)

[Printing Data](#)

[Printing Registration Form](#)

[Searching for Baby records](#)

[Selecting Chart Colors](#)

[Selecting Printer Fonts](#)

[Selecting Screen Fonts & Labels](#)

[Sorting Babies](#)

[Trash Can icon](#)

[Weight Data](#)

## Moving & Deleting Babies

Baby records may be moved between categories or deleted completely. Pair or pet records may only be deleted, not moved. The method used is called "Drag and Drop" and is done with the mouse. Undo is available immediately afterwards, so feel free to experiment. You must be in a baby category index (click one of the 10 category buttons). Scroll down to the last bird listed in the category. Place the mouse cursor over the last entry, press and hold down the **right** mouse button. The cursor will become a pair of scissors. Holding the **right** button down, move the cursor over one of the other category buttons. Notice that the cursor becomes a "ghost" image of the icon below it. When you are over the category you have chosen to move to, release the right mouse button. After a short period of disk activity, the entry will disappear from the index. Notice that the Undo Button is lit at this time. You could undo the move, but instead click on the category that you moved to and scroll to the bottom of its index, where you will find the moved baby record. Drag it with the right mouse button back to the category where it belongs.

If you had tried this example with a listing other than the last one in a list it would have been moved to the end by the process just used and would have been out of order by hatch date. If you would like, try moving a record from further up the list and then Undo the move by clicking the Undo button. Note that the record is re-inserted where it came from. If you switch to any other screen, the undo capability is lost.

See also Sorting Babies

**Deleting** a baby/pair/pet completely is accomplished in exactly the same way, except that you Drag the record to the Trashcan icon in the lower right of the tool column. Again, Undo is available until you perform some other operation.

## Sorting Babies

There is no direct option to sort the baby categories, but you can accomplish a sort by moving records within a category. Example: if you had 10 babies listed in the Conure category, and you wanted the 10th one to come before the 8th and 9th, you could drag the 8th listing to the Conure icon (in other words, onto itself); and the 8th listing again to the Conure icon. They would each move to the end of the list, moving the 10th up two.

See also [Moving & Deleting Babies](#)



## Daily Weighing

The scales tool is used for daily weighing of baby birds. Clicking this tool causes BirdData to search all ten of the baby categories for any babies 120 days old or younger. The initial search is done for the system date. A spreadsheet will appear which allows you to enter the weights for each of the birds found as well as any comment (36 characters). These will automatically be added to each baby's records.

If you are entering data for a date other than the system date, place that date in the box at the top of the form. A check box will appear with the label "rescan." Click that box, and the program will search the baby categories for all babies 120 days or less on the selected date. Enter the weight/comment data as before. You may continue to change the date and enter the new date's data without having to exit this function. The databases are updated immediately when you enter weights or comments.

If a date is entered and the search does not locate any babies between 0 and 120 days old for that date, a message will appear in the lower right status bar saying "No birds found."



## Search

The magnifying glass tool provides search functions for the baby categories. Enter a text string to search for and select appropriate search fields and categories. If you want to know what birds were raised in 1989, or what birds came from a particular breeder, for example, each is easy to find using the appropriate search text and fields to search. Search strings are not case sensitive, so April will find both APRIL and april.

The spreadsheet of search results can be used to access each record by Double-Clicking on the entry, just as you can do in the category indices. The lower-right status bar will take you back to the search result index. If just the header column of the spreadsheet is showing it means that no birds were found matching the search criteria, and a message saying that will appear in the lower right status bar.



## **Print Button**

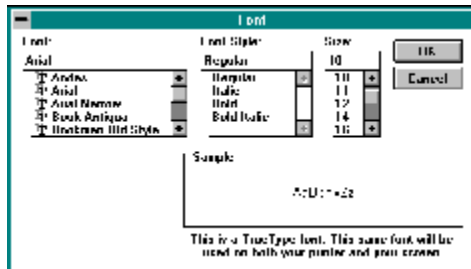
The printer tool will print out currently visible information. When the information is not available or is not printable, the lower left status bar will show "Print (Nothing to print)" when the cursor is placed over the printer button - otherwise it will describe what can be printed. Before you click the printer button, make sure that your default printer (see Printer Setup for information about the default printer) is on-line, and you may want to select a printer font. A font size of 10 or less is recommended.

Generally, printouts of text have a wide left margin to allow you to punch them for a binder.

Clicking the print tool when a graph is displayed will print a picture of the whole program screen.

Printing out one of the pair records will print all of the journal and clutch information; printing a baby's record will include all weight data for that baby.

## Selecting Printer Fonts

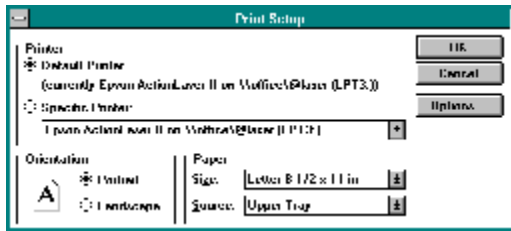


This button, selected through the Toolbox icon, allows you to select the font used by your printer when printing out data portions of the program. A dialog box as shown above will allow you select a font and size that is available for your default printer. If the font size selected is not small enough, some of the data lines may be truncated at the right of your pages. Generally, a font size of 10 should work fine.

This will only work on a previously selected default printer. If you are not sure that the default printer has been selected, use the Printer Setup button first.



## Printer Setup

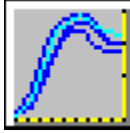


BirdData will only print to the Windows default printer, which is selected via the Windows Control Panel. If you have more than one printer connected, this button, accessed through the Toolbox icon, allows you to change the default without having to go to the Control Panel. If no default printer is installed when this tool is invoked an error will be generated. In that case go to the Control Panel and install a default printer. You should not have to do this more than once unless some other program removes the default printer. If you have more than one printer and use this button, the printer you select will become the default for all of your Windows program until you reset it. After selecting a default printer, use the Printer Font button to select a font type and size.



## **Undo Button**

This tool is only active (highlighted) when there is data available to undo. This is the case when you are editing a baby's record, when you move a baby between categories, and when you delete a baby, a pair or a pet. Undo availability ends when you move on to do something else, and the tool will dim.



## Graph Weights

**Birds to Graph**

Enter a method of bird selection and the categories to include:

Select: (or wildcard)

Initials of type

All birds in Category(s)

Single bird

African Greys       Macaws

Amazons             Monks

Cockatoos           Palmyrulus

Conures             Ringnecks

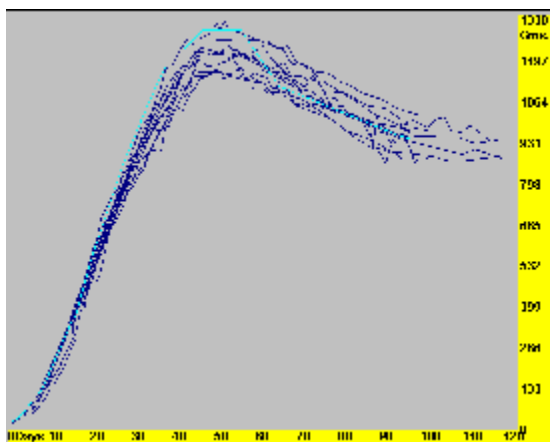
Lorikeets            Eclectics

Select all Categories

OK      Cancel

The line graph tool produces a dialog for entering the baby info you wish to graph, as shown at left. This is an important function of BirdData, since it allows you to compare a current baby with similar babies raised before. In the dialog box, you may choose to graph all of the birds in a category or categories, a single bird, or birds whose description match a search template. A qualifier in the description of your babies will allow you to search only for related babies. For example, if all of the African Grey babies simply had descriptions of African Grey, you will not be able to separate related birds. Using the initials of the parents at the beginning of the description will help. For example Gandalf and Sterling's babies are GS African Greys, and Casper and Wendy's babies are CW African Greys. You can graph them by selecting CW as a search string along with the African Grey category.

When you select OK, there will be some period of waiting with an hourglass cursor while the program searches for all of the birds that meet your criteria, figures what the scale of the graph will need to be, and then graphs the birds. The graphing function is limited to 200 birds, so if your criteria would produce more than that you will see only the first 200 found.



Once the graph is displayed, you may click on the lower right status bar to display a spreadsheet of the graphed birds. If there is a single bird that you would like to see highlighted on the graph, click on that listing. The hourglass will appear for a moment while the display is updated in the background. You may then click on the lower right status bar to return to the graph display. The chosen bird will be highlighted against the field as in the example at the left. You may choose to alter any of the colors used

in the graph. See [Selecting Chart Colors](#).

If you would like to "zoom in" on a part of the graph, click with the left mouse button on the area to enlarge. It will enlarge on a 2-to-1 basis. You may repeat this one time for a total 4-to-1 enlargement. Clicking with the right mouse button on the graph will reduce it back again. The print tool will print the entire program screen as it is displayed when printing is selected.

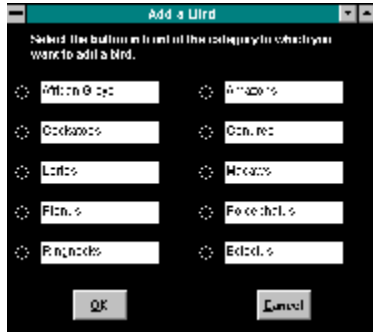


### **Blank Button**

This button has been left blank for possible future functions. If you have ideas that you would like to see incorporated into BirdData, let the author know. See [About BirdData](#) for details on contacting the author.



## New Baby



The "Chick in Shell" is the icon for the new baby tool. This tool is used to add a new baby to one of the ten baby categories. Clicking the tool will bring up the dialog at left so that you can select the category for the baby. Once you have selected a category, you will be prompted for a hatch date (the current system date is the default). You may then fill in the rest of the information.



## **Tool Box**

- Ilcons**
- Screen Fonts**
- Chart Colors**
- Background Color**
- Printer Setup**
- Printer Font**
- Pack Files**

The Tool Box button will bring up the list of buttons shown here. For information about any of these buttons click on the appropriate one at the left.



## **Baby Data**

There are 10 categories for baby records. They are identified by bird icons representative of the categories. In the distribution package, the categories are:

- African Greys
- Amazons (represented by a Blue-Front)
- Cockatoos (represented by a Sulfur-Crested)
- Conures (represented by a Sun)
- Lories (represented by a Yellow-Backed Chattering)
- Macaws (represented by a Blue & Gold)
- Pionus (represented by a White-Cap)
- Poicephalus (represented by a Senegal Parrot)
- Ringnecks
- Eclectus

Each of these icons and category names may be changed by the user to suit your needs - see [Changing User Icons](#).

See also:

[Individual Records](#)





## Pair Data

Pair records are accessed by clicking the interlocked sex-symbol button (this is a user-changeable icon - see [Changing User Icons](#)). There is a lot of similarity in the indexing with the baby records. Double-Click on an entry to show the data for that pair. Delete a pair by dragging with the right mouse button to the Trashcan. Undo a deletion by pressing the Undo button before doing anything else. There are no places that a pair record can be moved to.

### Adding Pairs:

There should always be one blank line at the bottom of the pair index. Double-Clicking that line will open up a file for a new pair and add a new line to the bottom of the index.

Pair ID	_____	Avg. Incubation	_____	First Egg	_____	Days	_____
Species	_____	Other Eggs	_____	25	_____	Days	_____
Female Name	_____	Female	_____	Hatch Date	_____	_____	_____
Female	_____	_____	_____	_____	_____	_____	_____
Acquired From	_____	Date Acquired	_____	2 20 95	_____	_____	_____
Scoring Method	_____	Date Scored	_____	By	_____	_____	_____
Male Name	_____	Male	_____	Hatch Date	_____	_____	_____
Male	_____	_____	_____	_____	_____	_____	_____
Acquired From	_____	Date Acquired	_____	2 20 95	_____	_____	_____
Scoring Method	_____	Date Scored	_____	By	_____	_____	_____
Date	Journal Entry						
11/27/1981	Gumball obtained from Wonderful World (Hatchment)						
04 28 1982	Storking second incubator (owned by Lipscomb)						
11/27/1982	Gumball second mature						
10 12 1983	Gumball sold to Lipscomb (not first time sold)						
Clutch	1st Egg	Egg Hatch	Hatched	Comment			
1	11/27/1981	11/27/1981	--	1 while 1 added in develop			
2	08 09 1985	08 09 1985		cluck			
3	11/27/1981	11/27/1981		cluck			
4	05 16 1986	06 16 1986		hatched without much noise			
5	11 27 1981	11 27 1981					

The pair record looks like the screen at left. Most of the entries should be self-explanatory. One exception is the listing for number of days of expected incubation at the top right. These numbers are used to calculate the approximate hatch date after you have entered the date on which an egg was laid. Two separate entries are included, one for first egg and the other for all other eggs. The author's experience has been that pairs typically do not incubate immediately when the first egg is laid, resulting in a longer incubation period. You may enter numbers into the two boxes directly, or you can press the recalc button to have the program use actual hatch dates to figure the time interval. The recommendation is to enter "book" figures to begin with and then use the auto-calculation when there is actual data.

At the bottom of the record are two spreadsheets. The top one is a "Journal" or diary. Click the mouse in the date box of a blank line and it will default to the system date, which you can change. Journal entries are 70 characters. Like the pair index, clicking the blank line will add a line. The probable limit is about 4000 lines (untested). No provisions have been made to delete or insert entries.

The second spreadsheet is a clutch record. Only the first egg of a clutch is shown. Clicking on a listing (or on the blank line to start a new listing) will open up the full clutch record. the limit on the number of eggs per clutch is 10, which satisfies most parrot type birds. If your birds lay more than 10 eggs per clutch, congratulations, and please use two listings for one clutch (do let the author know).

You may enter the date that an egg was laid and the date it hatched, with a 50 character comment. The expected hatch date will show if you click on the recalc button (provided that there is some actual hatch data) or you can use the lower right status bar to exit back to the clutch index and then re-access the clutch - the expected date will show then.



## **Background Color**

If you do not like the default screen background color of dark grey, you may change it. Selecting this option from the Toolbox icon will allow you to change the color used. You will see a color selection dialog that lets you select from a number of pre-defined colors or you may construct your own color.



## Pet Data

Pet or single bird records are accessed by clicking the bird-in-a-cage icon. It is one of the user selectable icons; see [Changing User Icons](#)

Pet Number	1	Name		BandID	
Species		Pet: sex			
Subc: sex		Age	To: Mon: Dis:		
Unhatched					
Acquired From	10000-001	Date Acquired	4-16-92		
Sex:	Male	Date:		Insert	
Sexing Method:	Visual	Scanned		By:	
Date	Journal Entry				
07-08-1992	Blue & white chickwing pet				
08-01-1992	Placed with April				
- -					

Edk: data      [Click here for pet index](#)

Everything about the pet records works like the [pair information](#), except for the various information on eggs. In the pair records, the user can enter a number or other designation for the pair, while pets are numbered sequentially.



## **Help Button**

The help button will run the help file you are reading now. You may also get help at any time by pressing your F1 function key. Generally F1 will provide help that is "context-sensitive," meaning that it will relate to the particular part of the program that you are using.



### **Trash Can**

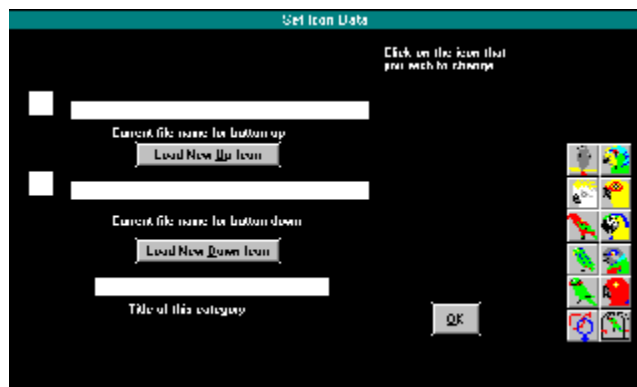
The trash can icon marks the spot where baby, pair and pet records can be dragged for deletion. Clicking the icon has no effect. See [Moving & Deleting Babies](#).



## Status Bars

There are two Status Bars located at the bottom of the BirdData screen. They are used to provide information to the user during program execution. When the mouse cursor is placed over most of the screen elements, a message will appear in the left Status Bar identifying the icon or possible action. The right-hand Status Bar is used as a toggle. When there is a message in that bar, it describes what will occur if the bar is clicked. The example above shows the messages that will be displayed when a bird graph is on screen and the mouse cursor is on the graph.

## Changing User Icons



The Icon button (accessed from the toolbox icon) will load a dialog that will allow you to configure the 10 category icons and the pair and pet icons to your own preferences, as well as set the titles of the categories. As distributed, BirdData has categories set up which represent the author's use of the program. Since it is unlikely that other breeders raise the same mix of birds, you may want to change the icons and titles to reflect the types of birds that you raise. When you click one of the bird icons, the currently selected icon paths appear as well as the category title.

Note that there are two separate icons, one for the button in the up position and one for the down position. You can load the same icon in both selections, but the button will not appear to "depress" when you click it. This does not affect the program operation, but it will affect the "feel" of the program.

A number of icons are provided with BirdData, in both up and down button formats. Those icons beginning with the letters SB are original creations of Sally Blanchard and the rest were drawn by the author. There are a number of shareware and public domain icon drawing programs available that will allow you to draw your own if you like. If you have trouble locating such a program, let the author know when you register BirdData, and a drawing program can be included with your program disk.

Clicking the load buttons will invoke a file dialog to set a new icon. Any valid Windows icon with a .ico file type may be used. All icons used by the program must be in a single directory, which by default is the "\ICONS" subdirectory of your BirdData directory. If you wish to keep the icons somewhere else, move them all. The next time that you run the program, it will look for the icons in the old location and, when it doesn't find them, will prompt you to provide the path to the new location.



## Individual Records

### Category index:

Click on one of the 10 baby category icons and the screen will display an index of the birds in that category. The index shows "Description," "Hatch Dt," "Band Num," and "Sold to." The last column is one the author uses to identify babies; it is one of 6 comment fields in the individual record screen as seen below. You can change the title of these fields as well as choosing which one is displayed in the index. See [Field Titles](#). The "Sold to" column displays "(Arcata Pet Data)" because personal data has been deleted. Double-click on one of the listed babies. It does not matter what column you double-click on. The screen will display the complete record for the baby bird as shown below.

### Baby Record:

Description	Hatch Date	Band Number	Age
FB African Gray	02-10-1985	AA 201 R	17 - Months

Parents:	
Breeder:	
Sold To:	
Comment:	
Comment:	
Comment:	

Day	Weight	Day	Comment
0	22.0	0	95G
1	22.1	1	95G
2	22.2	2	95G
3	22.3	3	95G
4	22.4	4	95G
5	22.5	5	95G
6	22.6	6	95G
7	22.7	7	95G
8	22.8	8	95G
9	22.9	9	95G
10	22.10	10	95G
11	22.11	11	95G
12	22.12	12	95G

Click on any of the elements of this screen to get more information about that element.

The bottom right status bar tells you that you can click on it to return to the category index. The data at the top is the same as shown in the index, with the addition of the bird's current age (calculated to the current system date). The six comment lines are free-form, 70 characters each. The labels at the beginning, Parents, Breeder, Sold To and three comment fields are all user definable, see [Field Titles](#). Below the comment fields are 121 days of weight records. The only editable fields are weight and comment. Comments are free-form, 36 characters per day. The limitation makes the record size reasonable. While you are working with the individual record the [Undo button](#) is turned on. When you first access a baby record, a copy is temporarily stored and is used to restore an aborted edit. Please be aware that when you switch away to another screen, including back to the index, the ability to Undo is lost.

## **Field Titles**

The labels for the 6 comment lines are user changeable. See [Selecting Screen Fonts & Labels](#) for details. One of these lines will be used in the category indexes; see the same topic for information on setting which line is used.

## **Primary Data**

The three fields at the top of the individual baby record, Description, Hatchdate, and Band Number, all appear in the category index along with a fourth field that is user selected.

## **Calculated Age**

The age field in the individual baby record is calculated from the hatchdate and the computer's system date. The age is shown in Years, Months, and Days. If either of the two dates are invalid, or if the hatchdate is later than the system date, no age will be displayed. If you change the hatchdate, you will have to exit to the category index and then re-select the baby to show the correct age.

## Comment Fields

The six comment lines are free-form, 70 characters each. The labels for the six fields are user set. In the distribution package they are called Parents, Breeder, Sold To and three Comments. The information in one of these fields will also appear in the category index. See Selecting Screen Fonts & Labels for more information. When you are editing in the individual record, the Undo button is highlighted; clicking the Undo button will restore the record to its content before you began your edit.

## Weight Data

BirdData maintains weights for 121 days (day zero is considered the hatchdate). Next to each day's age is the date for that age; it is calculated from the hatchdate. If you change the hatchdate, you will need to exit to the category index and re-select the record to have correct dates shown. You may enter a weight directly in the chart along with a comment, or you may use the [Scales](#) button to enter weights and comments for all babies on a particular day.

The Comment field is limited to 36 characters to conserve disk space.

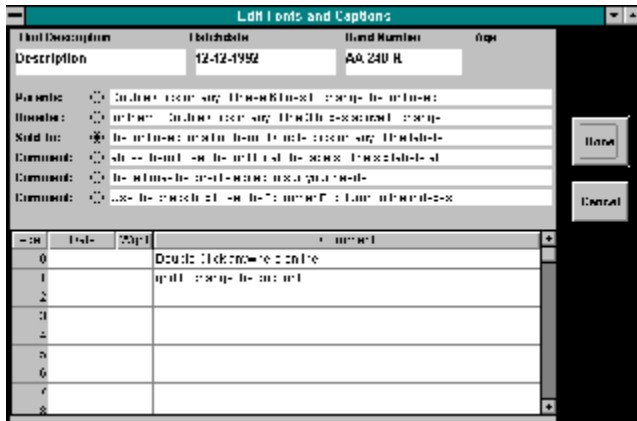
## About BirdData



BirdData 2.1 for Windows 3.1  
version 2.1.01  
Copyright © 1992  
By  
Don Bradner

BirdData is shareware, which means that it is freely distributed, but you are expected to register it if you use it regularly. Registration is \$25, jump to the [Registration Form Topic](#) to print out a convenient form. See [How to contact the author](#) for address information. Registrants will receive a disk copy of BirdData in its most current form, and will be notified of major upgrades. Registrants will receive a "key" file that will eliminate the startup shareware screen.

## Selecting Screen Fonts & Labels



Different monitors will look better with different fonts, and the fonts the author selected for BirdData may not look good on your computer. Selecting the Screen Fonts button after selecting the [toolbox icon](#) allows you to set the fonts for most of the elements of the program. Follow the on-screen directions and try various fonts until you like the look. Also available in this tool are the ability to change the labels for the 6 comment lines in the baby records, and the ability to select which of these lines will show up as a title in the category index.

When you leave this dialog, you will get a message that the program must be ended and restarted for changes to take effect.



## Selecting Chart Colors



You may find that the author's choice of colors for the chart function do not look good on your monitor. Selecting this option from the [Toolbox icon](#) will allow you to change the colors used. There are 4 elements that you can change: Background, Primary Line, Highlighted Line, and Border. The Primary Line Color refers to the color that is used to chart the full complement of babies selected (shown above: Dark Blue), while the Highlighted Color refers to the color used for a single bird when it is displayed against the field (shown above: Cyan). The Border is the area at the bottom and the right of the chart on which ages and weights respectively are listed (shown above: Yellow). The background shown above is Light Grey.

These changes take effect immediately. If you choose the same color for two elements that should contrast, you will receive a warning message. If you choose black for the border color, you will receive a message that the text will not show.

## **Packing Files**

If you delete a lot of birds, the size of the data file on your hard disk for the category does not shrink. This tool will reduce the size of the files so that they take up less disk space. It is unnecessary if you delete only a few birds. This tool should only be used with caution. Back up your data files before using it.

## How to contact the author

The author is interested in hearing what you think about BirdData, whether you register or not. You may contact the author by mail at the following address:

Don Bradner  
Arcata Pet  
600 F Street  
Arcata, CA 95521

You may also contact the author on-line through a variety of channels. First and foremost is the Bird Info Network in Arvada, Colorado. The number for BIN is (303) 423-9775 at 2400 baud, (303) 422-4958 for 9600 baud and (303) 940- 7357 for 14.4K v.32bis or HST. The author also regularly participates on three FidoNet bird-oriented echoes: Parrots, Aviculture, and Exotic\_Birds. All of these are carried on BIN and a number of other computer bulletin board (BBS) systems.. Messages on BIN or through the Fido echoes should be addressed to Don Bradner. The author may also be contacted via CompuServe. Address CompuServe mail to 76130,1007.

The latest version of BirdData can normally be found in the following places:

CompuServe Pets Forum, Library 5 (GO PETS)  
Seahunt BBS (San Francisco) (415) 431-0473 (all speeds)  
BIN (numbers above), although only paid users of BIN may download files  
Exec-PC BBS (Milwaukee) (414) 789-4210; HST (414) 789-4352; v.32 (414) 789-4360

Registration of \$25 will include a copy of the latest version on disk, see [Registration Form](#). Users already registered may obtain new disk copies for \$5 to cover the cost of the disk, mailer, and postage.

To print this form, Choose File, Print Topic

**BirdData 2.1  
Registration Form  
Version 2.1.01**

**Send this form with \$25 to:**

**Don Bradner  
Arcata Pet  
600 F Street  
Arcata, CA 95521**

**Name:** \_\_\_\_\_

**Mailing Address:** \_\_\_\_\_

\_\_\_\_\_

**City & State:** \_\_\_\_\_

**If you wish, you may pay with a credit card:**

**Card type:**  VISA  MasterCard  AMEX  Discover

**Card Number:** \_\_\_\_\_

**Expiration Date:** \_\_\_\_\_

**Signature:** \_\_\_\_\_

**Disk Size:**  5-1/4  3-1/2

**Tell me what you like about BirdData:** \_\_\_\_\_

\_\_\_\_\_

\_\_\_\_\_

**Tell me what you would like me to add or change in BirdData:**

\_\_\_\_\_

\_\_\_\_\_

## **Acknowledgments**

The author has been helped by many birdkeepers and programmers with this project. Special thanks to the users of Bird Info Network for Beta testing, to Stephen Ceideburg, Co-moderator of the Fidonet Parrots Conference for the scan of the author's baby Eleonora Cockatoo which is used in the program's logo and icon, and to Sally Blanchard for all of the fine icons she drew for the program.

